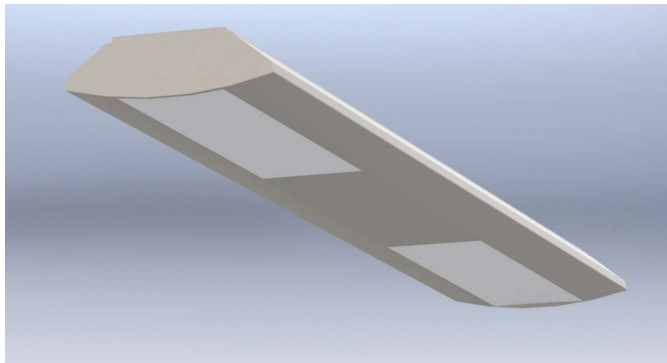


Interior Lighting

Wimbledon ceiling light



5 YEAR WARRANTY
ECA compliant

Wimbledon LED ceiling lighting –

Our Wimbledon LED ceiling lighting is purpose designed for commercial and educational environments. They are extremely energy efficient at around 150lm/W making them highly cost effective

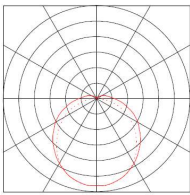
Available as 1200mm units, they can be used singly or as part of a run. Options include 1-10, SwitchDim or DALI dimming and emergency operation. A separate sensor/spacer module is available.

If required, there is an uplighting module available to brighten dark ceilings

The fittings comprise an anodised aluminium housing with a polycarbonate opal or prismatic diffuser.

Good to know: The Wimbledon LED ceiling light are an extremely versatile solution to your lighting needs

Polar diagram



Ordering

WS-A-B-C-D-E-F

where		
A	Model	12=1200mm,
B	Wattage	30, 40, 50, 60
C	Colour	NW, CW
D	dimming	D1 = 1-10, D4 = Dali/switchdim
E	Emergency pack	
F	mounting	S= suspended,

These luminaires are used in bespoke applications so please call to discuss your requirement.

Wimbledon LED fittings are best for...

Classrooms
Offices
Libraries

Not sure which lighting solution is right for your needs? Give us a call to discuss your requirements

Benefit from...

Low power consumption - **Reduced energy bills, reduced CO₂**
Long life, reduced maintenance - **Lower running costs**
Instant start, full brightness at turn-on in all conditions - **Improved safety**

Specifications

Sealing	IP20
Housing	Aluminium
Diffuser	opal or prismatic
Voltage	220-240V 50/60Hz
Markings	CE, ROHS
LED	NW 4000K, CW 5000K
Life	50000hrs (L70)
Power factor	>0.9
Efficacy	>150 lm/W, (system, nominal)
Colour rendering CRI	>80 Ra
Ambient temp	-20/+40
ECA compliant	Yes
Dimensions	(L)1200 x (W)300 x (H)90
Dimensions (sensor module)	(L)300 x (W)300 x (H)90

Options

Emergency function	
Sensor operation	on/off, dimming, daylight harvesting
Dimming	DALI/switchdim or 1-10, Casambi Bluetooth

Output (CW) per 1200mm section

Power(W, system)	Output (lm)
30	4500
40	6000
50	7500
60 (max)	9000