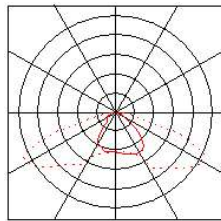
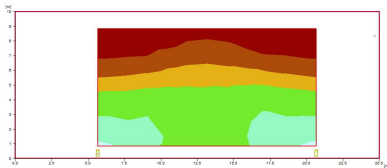


Exterior Lighting

Westminster II Street Light



Luminous Intensity.



Ordering

WES2-C-E-I

Where

C	Model	25, 45, 65, 85
E	Colour Temp.	NW = 4000K, WW = 3000K
I	Sensors	PS = NEMA socket PN = NEMA socket + Photocell

Spigot adapter	42mm	ACS12142
	34mm	ACS12234

Example

WES2-45NW-PN 45W, neutral white with photocell

Westminster street light is best for...

Car parks
Private/public street areas
Footpaths and walkways
Bridges
Stadia

Not sure which street lighting solution is right for your needs? Give us a call to discuss your requirements.

AC-D2M
Driverless RANGE
Guaranteed 5 years

Westminster II IDT professional – unrivalled street performance

The Westminster II range of IDT driverless street lights uses ac technology to improve reliability and at 125 lm/W is one of the most efficient of its type.

The body is a stylish lightweight aluminium design with a glass lens and is among the greenest and most affordable on the market. They are available in power ratings from 25 - 100 watts making them a versatile solution for many street/parking applications. Good colour rendering and visibility, full brightness at turn-on, and minimal overspill make this an ideal choice. This range is an excellent replacement for sodium lighting - providing instant, measurable benefits in lower maintenance costs, reduced power and improved lighting levels.

Good to know: At 4000K this range of street lights is less likely to disturb your neighbours and wildlife

Benefit from...

Low power consumption - **Reduced energy bills, reduced CO₂**
Long life, reduced maintenance - **Lower running costs**
Excellent colour rendering - **Improved safety**
Driverless technology - **Improved reliability**

Specifications

Colour Temperature	Neutral White 4000K (nominal)
Efficacy	125lm/W
Colour Rendering Index	>70Ra
Voltage	220-240Vac 50/60Hz
Beam Angle	Gull wing
Lens	Asymmetric, glass
Markings	CE
LED	
LED life	85,000 hrs L80 B10 @25°C
Power factor	>0.97
Colour	Dark grey
Mounting	60mm horizontal
Sealing	IP65
Shock	IK08
Ambient temp	-20°C to +45°C

Model	Physical dims	Weight
25	420mm x 195mm x 125mm	3kg
45	420mm x 195mm x 125mm	3kg
65	535mm x 242mm x 135mm	4.4kg
85	535mm x 242mm x 135mm	4.4kg

Options

Photocell	
Colour temp	(120lm/W)
spigot adapters	42mm, 34mm

Output

Model	LED Power (W)	Luminaire Output NW (Lm)
25	25	3125
45	45	5625
65	65	8125
85	85	10625