

Exterior Lighting

Warwick LED Wall Pack



UK Manufacture
5 YEAR WARRANTY

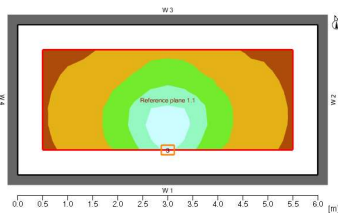


The Earlsmann Warwick wall pack light is designed to provide efficient, effective external lighting that reduces running costs and improves visibility to create a safer environment. Ideal for driveways, ramps and car park applications, the Warwick is also well suited to exterior walkways and footpaths, railway stations and tunnels.

Warwick units use the latest CREE LED technology, combining high-quality lighting levels with a significant reduction in energy use – helping you to lower your carbon footprint. The Warwick LED wall pack can be fitted with motion sensors, and is also suitable for use as emergency lighting.

Good to know: All Warwick LED wall packs are manufactured in the UK, using CREE LEDs for quality and reliability, and are supplied with a five-year warranty for your peace of mind.

Luminous Intensity (example)



Typical output 20W
56lx max
35lx average
5000K cool white
Luminaire height 2.8m

Ordering

WAR-DE-JK

Where		
D	Wattage	20 or 30
E	LED colour	NW, CW
J	Sensor	M = Microwave, M20, P = Photocell
K	Emergency Option	E

Example
WAR-30CW
30 Watt cool white luminaire

Warwick LED wall packs are best for...

- Car parks
- Public areas and amenities
- Railway stations
- Driveways
- Access ramps

Not sure which external lighting solution is right for your facilities? Give us a call to discuss your requirements.

Benefit from...

Low power consumption - **Reduced energy bills, reduced CO₂**
Long life, reduced maintenance - **Lower running costs**
Instant start, full brightness at turn on - **Improved safety**

Specifications

Colour Temperature	Cool White 5000K
Efficacy	up to 110lm/W
Colour Rendering Index	up to 80Ra
Voltage	220-240Vac 50/60Hz
Markings	CE
LED	CREE array 2530
LED life $T_j=85^\circ\text{C}$	LM80/TM21 (6k) L90>36000hrs *
Power factor	>0.9
Driver	>85% efficiency
Housing	Black Polycarbonate
Dimensions	250x300x205
Weight	<2kg
Sealing	Ip65
Ambient temp.	-20°C to +40°C

* Please call us to discuss LM80/TM21 testing

Options

Photocell	
Emergency	
Sensor	on/off and preset
LED colour	4000K NW

Output

Power (LED)	Total (W)	Output (Lm)
20	23	2500
30	34	3750