

Interior Lighting

RIMINI LED Downlight

5 YEAR WARRANTY



RIMINI - eco downlights for commercial use

The **RIMINI** downlight is a limited range from Earlsmann designed to complement modern interiors including offices and shops, schools and hotels.

This range of LED down lights comes in a choice of power ratings and colour temperatures.

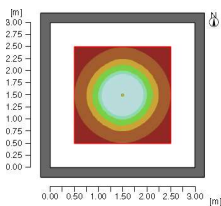
Rimini LED downlights are supplied complete with driver.

Good to know: designed to last over 30,000 hours, the Rimini LED down light emits no UV and is highly efficient, reducing energy costs and helping you to achieve your carbon reduction targets.

Benefit from...

Low power consumption - **Reduced energy bills, reduced CO₂**
 Instant start, full brightness at turn on - **Improved safety**
 Long life - Reduced maintenance - **Lower running costs**

Luminous Intensity



Typical output at 10W

400lx max 110lx average
 4000K cool white
 Luminaire height 2.3m

Specifications

| | |
|------------------------|-------------------------------|
| Colour Temperature | Warm (3000K), Natural (4000K) |
| Colour Rendering Index | 80Ra |
| Voltage | 220-240Vac 50/60Hz |
| Power factor | >0.85 |
| Markings | CE ROHS |
| Efficacy | up to 80lm/W |
| LED | COB or smd |
| LED life | 30000hrs |
| Beam angle | 70° |
| Colour | white |
| Ambient temp | -20° - 45°C |

Ordering

RIM-DF

where

| | | |
|----------|---------------------|----------------------|
| D | Model | |
| F | Dimming | D1 = 1-10, D2 = DALI |
| K | Emergency Operation | E |

Example
 RIM-F20NW-E
 frosted diffuser, 20 Watt, neutral white, emergency

Photometric files available upon request

| | | | |
|------------|---------|-----------|--------|
| Dimensions | Wattage | Size | Cutout |
| | 15 | 132 x 59 | 108 |
| | 20 | 182 x 81 | 160 |
| | 30 | 240 x 105 | 210 |

If you have an odd size of cutout please ask about additional acrylic bezels to reduce remedial work.

Options

| | |
|-----------|---------------------------------|
| Emergency | 3hour non-maintained |
| Dimming | |
| Diffuser | C = Clear/reflector F = frosted |

Output

| Model | Total W | Output(lm) | (equivalent to) |
|-------|---------|------------|-----------------|
| F15NW | 15 | 1000 | 1x26 |
| F20NW | 20 | 1500 | 2x18 |
| F30NW | 30 | 2100 | 2x26 |
| C15NW | 15 | 1100 | |
| C20WW | 20 | 1500 | |
| C20NW | 20 | 1600 | |

RIMINI LED downlights are best for...

- Offices interiors and reception areas
- Retail outlets and shopping centres
- Hospitals, conference centres and libraries
- Hotels and restaurants
- Corridors and stairwells

Not sure what interior lighting solution is right for your building? Give us a call to discuss your requirements.