

Exterior Lighting

PORTSMOUTH S Anti-Corrosive

5 YEAR WARRANTY
ECA compliant



Portsmouth S LED fittings – the most popular anti-corrosive

Our Portsmouth S range of anti-corrosive LED fittings has been updated to meet the latest ECA requirements, >105lm/W. They are purpose built to support the most popular sizes used in industrial environments – from warehouses and loading bays to car parks, walkways and swimming pools. Available in 4ft, 5ft and 6ft all units are IP65 sealed and suitable for exterior or interior use. The fittings comprise a tough polycarbonate body and an opal diffuser. Each unit can be surface-mounted or suspended, and has knockout holes at each end for wiring. They are fitted with lockable, tamper resistant, stainless clips as standard.

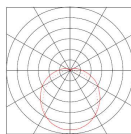
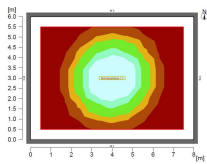
Optional stainless 316 are available for marine/chlorine environments.

Good to know: The Portsmouth S anti-corrosive LED fittings are ECA compliant.

Benefit from...

Low power consumption - **Reduced energy bills, reduced CO₂**
Long life, reduced maintenance - **Lower running costs**
Instant start, full brightness at turn-on in all conditions - **Improved safety**

Luminous Intensity



Typical output POR152
100 lx average
4000K neutral white
Luminaire height 2.5m

Ordering

PORS-B-D-FJK

Where		
B	Model	121, 122, 151, 152, 181, 182
D	LED colour	NW, CW
F	Dimmable	D2 = DALI
J	Sensor	M = microwave sensor M20 - comfort 20% level
K	Emergency pack	E

Example
PORS-152-NW-E
5ft (1500) fitting with neutral white LED and Emergency pack

These fittings are supplied with stainless steel (304) clips as standard

Portsmouth S anti-corrosive LED fittings are best for...

Car parks
Tunnels
Walkways
Warehousing
Loading bays
Swimming areas

Not sure which lighting solution is right for your needs? Give us a call to discuss your requirements

Specifications

Sealing	IP65
Housing	Polycarbonate
Diffuser	Polycarbonate (opal)
Clips	Stainless steel 304, lockable
Voltage	220-240V 50/60Hz
Markings	CE, ROHS
LED	NW 4000K, CW 5000K
Life	50000hrs (L70)
Power factor	>0.9
Efficacy	>110 lm/W
Colour rendering CRI	>80 Ra
Ambient temp	-20/+45
ECA compliant	Yes

Options

Emergency function	
Sensor operation	
Clips	Marine grade 316
Dimming	DALI

Output (CW)

Model	Power(W _{system})	Output (lm)	Dims (mm)
121	19	2250	1270x80x 85
122	38	4500	1270x80x118
151	30	3550	1570x80x85
152	60	7100	1570x80x118
181	35	3920	1870x80x85
182	70	7840	1870x80x118