

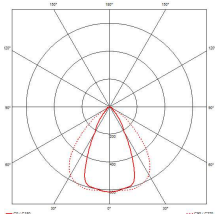
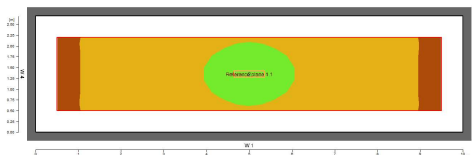
Interior Lighting

Linear LED High Bay

5 YEAR WARRANTY



Luminous Intensity, single fitting at 8m



Typical output 90W
129 lux, 0.7 uniformity
in 10m x 2.7 aisle
Luminaire height 8m

Ordering

LIN-HB-DE-F

Where

D	Model	90, 120, 150, 180
E	Colour temp	CW
F	1-10 dimming	D1

Example
LIN-HB-90CW-D1
90W cool white, dimmable
Photometric files are available upon request.

LINHB is best for...

- Warehouses, factories and workshops
- Aisle lighting
- Retail/shopping centre
- Show room
- Tennis/sports courts

Not sure the LIN HB is right for your building? Give us a call to discuss your requirements.

Introducing the LIN-HB, the Linear LED high bay...

The Earlsmann Linear LED High Bay is offered in a range of outputs to suit your requirements.

It has been designed to maximize light level at ground level in narrow warehouse aisles and to provide good vertical illumination. It is also suitable for tennis courts and other sports applications

The LIN-HB is a highly efficient lighting unit, reducing energy costs and helping you to achieve your carbon reduction targets. With a design life of over 50,000 hours, you'll save on maintenance costs too – particularly when lighting is located in hard-to-reach areas high above the ground.

As standard, this fitting is dimmable so ideal for daylight harvesting applications to further increase your savings.

World leading Nichia LEDs and Meanwell drivers are used to ensure high performance.

Good to know – the LIN-HB is optimised to provide max efficiency for high racking.

Benefit from...

- Low power consumption - **Reduced energy bills, reduced CO₂**
- Minimal maintenance - **Lower running costs**
- Minimal heat production - **Savings in air-con maintenance costs**
- Instant start, full brightness at turn on - **Improved safety**

Specifications

Colour Temperature	CW 5000K
Colour Rendering Index	80Ra
Sealing	IP65
Voltage	100-277Vac 50/60Hz
Markings	CE, RoHS
Efficacy	120lm/W (nom, system)
LED	Nichia
LED life	60000 hours L70
Ambient temp	-30°C / + 50°
Power factor	>0.98 (full power)
Body	Aluminium
Lens	Polycarbonate
Beam angle	60° x 90°
Colour	Black
Dimmable	Yes, 1-10

Dimensions, no reflector	90W	120W	150W	180W
Dia x Height (all 100mm deep)	726x140	947x140	1178x140	1400x140
Weight	4.8kg	5.8kg	6.9kg	8.0kg

Options

Colour temp	4000K
-------------	-------

Output

Model	Total W	Output (lm)
90	91	10500
120	119	14000
150	154	17500
180	186	21000

Earlsmann reserve the right to change the specification without notice

Rev 041016