

# Exterior Lighting

## Stafford LED Flood Light



**UK Manufacture**  
**5 YEAR WARRANTY**

### Choose our Stafford for the ultimate LED Flood light

The Stafford floodlight uses the latest LED technology, starting instantly at full brightness, even in low temperature environment. Built-in reflectors provide enhanced efficiency, flexibility and precise beam control.

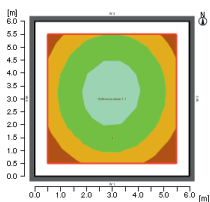
With a service life of over 50,000 hours, the Stafford will help to reduce maintenance costs – particularly as floodlighting is often located in hard-to-reach areas high above the ground. These units are fitted with the most efficient LEDs available and are suitable for use with microwave switching, cutting energy costs and helping you to achieve your carbon reduction targets.

**Good to know** – Stafford LED floodlights include the latest CREE LED technology, providing unrivalled efficiency and value for money.

### Benefit from

Low power consumption - **Reduced energy usage, reduced CO<sub>2</sub>**  
Instant start, full brightness at turn on - **Improved safety**  
Long life, reduced maintenance - **Lower running costs**

### Luminous Intensity (example)



Typical output 60W  
B50 beam angle  
195lx max  
116lx average  
5000K cool white  
Luminaire height 5.5m

### Ordering

#### STA-H-DEF-J-L

Where

<b>D</b>	Wattage	50, 60
<b>H</b>	Diffuser	AD = Acrylic, PD = Polycarbonate
<b>E</b>	LED Colour	CW
<b>F</b>	Beam angle	B120,B20,B35,B50
<b>J</b>	Sensor	M = Microwave
<b>L</b>	Mounting	ST = Stirrup

Example

STA-AD-60CWB50-M-ST

60 Watt cool white with microwave sensor and stirrup mount. 50 deg beam angle

Photometric files are available up on request

### Stafford LED floodlights are best for

Warehouse & aisles  
Cold store/ freezer rooms  
Sports hall/arena/swimming pool  
Recreation area  
Industrial area, particularly loading bays  
Car parks and pathways

Not sure what floodlighting solution is right for your building? Give us a call to discuss your requirements.

### Specifications

Colour Temperature	5000K - cool white
Colour Rendering Index	up to 70Ra
Sealing	IP65**
Voltage	220-240Vac 50/60Hz
Beam angle	see options
Markings	CE
Efficacy	up to 100lm/W
Mounting	Stirrup
Weight	less than 3kg
Dimensions	360 x 250 x 60 mm
Finish	White Powder Coat
Diffuser	Acrylic (standard)
LED	CREE array
LED life $T_j=85^{\circ}\text{C}$	LM80/TM21 (6k) L90>36000hrs *
Power factor	>0.9
Driver	>85% efficiency

\* ask us about LM80/TM21 testing  
\*\* when used downward facing

### Options

Beam angle	B120 = 120°, B50 = 50° B20 = 20°, B35 = 35°
Sensor operation	on/off and preset
Mounting	Pole mount
Diffuser	Polycarbonate

ASK about asymmetric beam angles

### Output

LED Power (W)	Total W	Output (lm) CW
50	58	6000
60	68	7000