

# Exterior Lighting

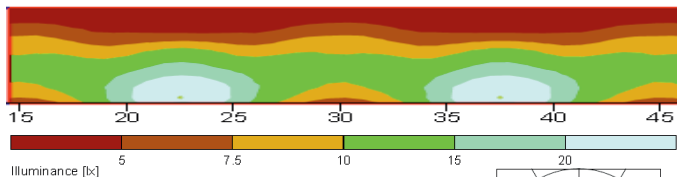
## Lincoln LED Street Light



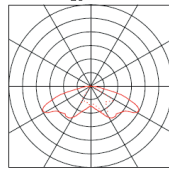
**UK Manufacture**  
**5 YEAR WARRANTY**



### Luminous intensity (example)



Typical output at 21W  
5000K cool white Beam angle BST  
Luminaire height 4.5m Spacing 15m  
Road width 8m  
Min 3lx average 10lx



### Ordering

#### LIN-C-DEF-IJ

Where		
<b>C</b>	Body colour	WH = White
<b>D</b>	Wattage	14, 21, 30, 37
<b>E</b>	Colour Temp.	CW = 5000K
<b>F</b>	Beam angle	BST = gullwing
<b>I</b>	Dimming	D1 = 1-10
<b>J</b>	Sensors	P1 = photocell S1 = photocell with dimming

#### Post top

LIN-XXX	V76 = vertical 76mm, V89 = vertical 89mm H42 = horizontal 42mm, H34 = horizontal 34mm, H60 = horizontal 60mm ST = Stirrup
---------	--

Example	
LIN21CWBST-P1	21Watt, cool white with photocell.
LIN-H60	60mm horizontal mount

### Lincoln street lighting is best for...

- Car parks
- Private street areas
- Bridges, footpaths and walkways
- Stadia
- Amenity areas

Not sure which street lighting solution is right for your needs? Give us a call to discuss your requirements.

### Lincoln – the "green" LED street light

The Earlsmann Lincoln street light is extremely efficient and low cost making it one of the greenest and environmentally friendly available today. It is extremely compact making it unobtrusive and can be supplied with optional decorative side or bottom cheeks to complement the local environment. There is a model to suit all "S" Class requirements.

The CREE cool white LED used delivers excellent colour rendering and visibility, full brightness at turn-on, and minimal overspill. This is the ideal replacement for sodium lighting - providing instant, measurable benefits in lower maintenance costs, reduced power consumption and improved lighting levels.

Lincoln street lights use the "Stella" lens from Ledil to produce the ideal "gull-wing" light distribution. To simplify any maintenance required the power supply is mounted in the post making it accessible from the ground. Earlsmann manufactures the Lincoln street light in the UK, providing a high-quality, reliable product supported by a full five-year warranty.

**Good to know:** The Lincoln uses the latest CREE LED technology to provide unrivalled efficiency – typically using 60% less energy than older LPS lighting.

### Benefit from...

- Low power consumption - **Reduced energy bills, reduced CO<sub>2</sub>**
- Long life, reduced maintenance - **Lower running costs**
- Excellent colour rendering - **Improved safety**
- Easy access driver - **simplified/lower cost maintenance**

### Specifications

Colour Temperature	Cool White 5000K (nominal)
Efficacy	up to 112lm/W
Colour Rendering Index	>70Ra
Voltage	220-240Vac 50/60Hz
Beam Angle	Gull wing
Markings	CE
LED	CREE array 2530
LED life (T <sub>j</sub> =85°C)	LM80/TM21 (6k) L90>36000hrs *
Power factor	>0.95
Driver	>88% efficiency
Colour	White, standard
Dimensions (body)	370mm x 100mm x 50mm
Weight	<1.2kg
Sealing	IP65
Ambient temp	-25°C to +40°C

\* Please call us to discuss LM80/TM21 testing

### Options

Post mount	
Photocell	5 or 12 year guarantee
Colour	RALxxx - may be specified
Dimming	Preset
Timer	
Side/bottom cheeks	
Colour temp	3000K, 4000K
LeafNut	Compatible

### Output (actual)

LED Power (W)	Total Power	Luminaire Output (Lm)
12	14	1650
18	21	2200
26	30	2800
39	45	4000

Earlsmann reserve the right to change the specification without notice

Rev 010614

