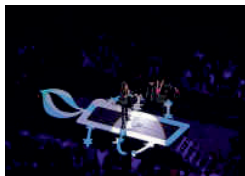
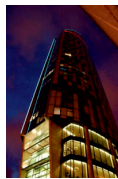
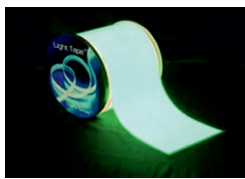
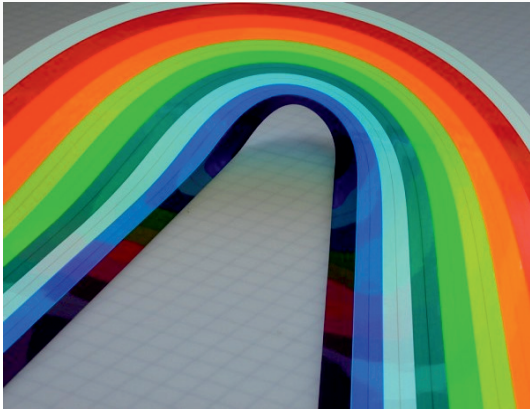


# Electroluminescent Products

## LightTape® Overview



### Power Supplies

A wide range of ac or dc power supplies are available for Light Tape®, their selection depends up on the area to be illuminated.

### Support

if you would like to talk to someone about your application please call our Technical Department on 08456 434740

### Applications

- Bars - shelves, bar lighting
- Kitchens - undershelf, plinths,
- Signage
- Architecture - feature and accent lighting
- Interiors - cove, pelmet lighting
- Caravans
- Stair nosing
- Access indication

### Description

Earlsmann's LightTape® is probably the longest and thinnest electroluminescent lamp in the world. It is as thin as a credit card and provides continuous light up to 90m as a single piece powered from one end.

LightTape® is available in a number of standard colours and can be dimmed and flashed making it extremely versatile. It may also be laser cut to shape, please ask for details.

It may be installed using self adhesive tape, plastic or metal channels or even Velcro.

### Features

- No UV or heat
- No RFI
- Non Toxic
- Low power
- Long life
- 90m length
- Flexible
- Thin

### Benefits

- Safe with textiles and art
- No interference
- Safe to use
- Economical to operate
- Low maintenance
- Continuous light
- Easily fits contours
- Takes up minimal space

### Specifications

Length (tape)	Up to 90m
Width, standard (mm)	6.35, 12.7, 25.4, 50.8, 76.2, 101.6, 152.4 0.25", 0.5", 1", 2", 3", 4", 6"
Thickness	0.010 - 0.020 inches (0.254 – 0.508 mm)
Size (custom panels)	Up to 600mm wide
Phase Angle	78° Leading Edge
Power Source	Load Responsive Inverters / Ballasts
Input (inverter)	3 to 24 VDC or 90 to 260VAC
Lamp Operating Volt Range	90 to 350 VAC
Lamp Operating Freq. Range	200 to 700 Hz
Power at 250V/650Hz	0.20 milliamps per sq. in.(50mW/ sq. in.)
Useful Life	In excess of 30,000 hours at 115V/60Hz In excess of 10,000 hours at 250V/400Hz
Operating Temperature	-40°C to +65°C

### Accessories

A complete range of accessories including connectors and mounting hardware is available.