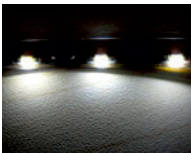
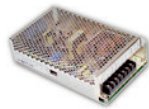
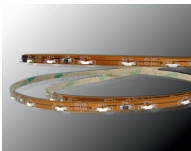
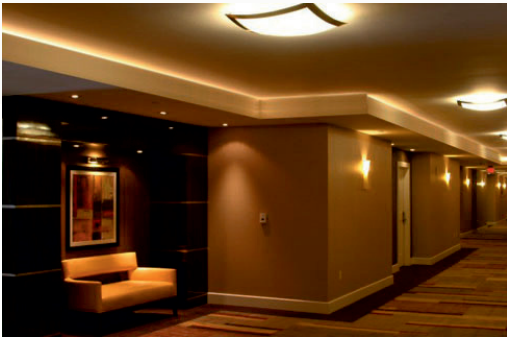


LEDs

Side Emitting Flexible Ribbon



Description

The Earlsmann side emitting flexible LED ribbon is available in a choice of colours. It is suitable for many applications and can be cut at 50mm intervals (3LEDs)

It can provide attractive task and feature lighting where space is limited and is well suited to edgelighting thin panels and under counter tops.

It is simple to install using double sided tape.

Features

Low voltage
Long Life
Simple installation
Low power
Thin, only 1.5mm thick

Benefits

Safe
Minimal maintenance
Low installation costs
Low running costs
Discreet

Specifications

Material	Flexible PC Board
Lighting Source	335 SMD LEDs
No of LED's	60/m
Viewing Angle	90°
Running Voltage	12VDC
Power	5.4W/m
Life	30,000 hours
Dimensions (nominal)	H=1.5 W=8mm L=5000mm

Options

Can be supplied in shorter lengths

Ordering

Part No.	Colour
ELSMDRSED-R	Red
ELSMDRSED-Y	Yellow
ELSMDRSED-B	Blue
ELSMDRSED-G	Green
ELSMDRSED-W	White
ELSMDRSED-WW	Warm White

Power supplies and drivers

We have a complete range of power supplies available to suit your application.

Please see the relevant data sheet.

If you require advice please call our Technical Department on 08456 434740

Applications

Bars - shelves, bar lighting
Kitchens - undershelf, plinths,
Cupboards
Signage
Architecture - feature and accent lighting
Interiors - cove, pelmet lighting
Caravans
Counter top edge lighting
Edgelighting