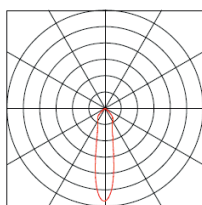
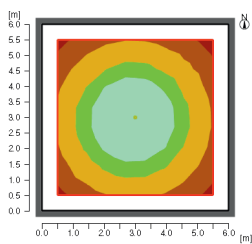


Exterior Lighting

Dover LED Flood Light



Luminous Intensity (example)



Typical output 120W
B20 beam angle
280x max 154lx average
5000K cool white
Luminaire height 10m

Ordering

DOV-H-DEF-J-L-M

Where

H	Diffuser	AD = Acrylic, PD = Polycarbonate
D	Wattage	60, 90, 120, 150,
E	LED Colour	CW
F	Beam angle	B120,B20,B35,B50
J	Sensor	M = Microwave
L	Mounting	ST = Stirrup
M	Photocell	P = fitted

Example

DOV-AD-150CWB20-ST

150 Watt, cool white, 20° beam angle acrylic diffuser

Photometric files are available up on request

Dover flood lighting is best for...

Warehouse, loading bays & aisles
Cold stores and freezer rooms
Recreation areas, sports halls/arenas/swimming pools
Industrial areas
Car parks

Not sure if the Dover flood is right for your needs? Give us a call to discuss your requirements.



UK Manufacture
5 YEAR WARRANTY

Dover LED floodlights – for ultimate brightness, service life and reliability

The Dover floodlight from Earlsmann starts instantly at full brightness, even in cold conditions – so it's ideal for outdoor areas and cold areas. It's also perfectly suited to sensor operation, helping you to save energy and improve lighting control.

With a service life of over 50,000 hours, the Dover floodlight units require minimal maintenance, which is particularly important when lighting is located at height. The LED drivers are mounted in a separate box to provide improved reliability and easier servicing. This high-performance floodlight is manufactured in the UK and uses the latest LED technology and reflectors to ensure efficiency and precise beam control.

Providing up to 100lm/W, the Dover floodlight combines high-quality light levels with a significant reduction in energy use – helping you to lower your carbon footprint.

For increased protection in high ambient temperatures our luminaires have active thermal control.

Good to know: The Dover uses the latest CREE LED technology and reflectors to provide unrivalled efficiency

Benefit from...

Low power consumption - **Reduced energy usage, reduced CO2**
Instant start, full brightness at turn on - **Improved safety**
Long life, reduced maintenance - **Lower running costs**
Active thermal control - **Increased reliability**

Specifications

Colour Temperature	5000K - cool white
Colour Rendering Index	up to 70Ra
Sealing	Ip65
Voltage	180-305Vac 50/60Hz
Beam angle	see options
Markings	CE
Efficacy	up to 100lm/W
Mounting	Stirrup
Weight	up to 12kg depending on model
Dimensions	320 x 220 x 120
Finish	Black Powder Coat
Diffuser	Acrylic (standard)
LED	CREE array
LED life $T_j=85^\circ\text{C}$	LM80/TM21 (6k) L90>36000hrs *
Ambient temp T_a	-25°C / + 40°C
Power factor	>0.98 at full power
Driver	>92% efficiency at full power

* Please call us to discuss LM80/TM21 testing

Options

Beam angle	B120 = 120°, B50 = 50° B20 = 20°, B35 = 35°
Sensor operation	Microwave
Photocell	
Diffuser	Polycarbonate
Internal	Ventilated drive box IP43

Output

Power (W)	Total W	Output (lm) CW
60	68	7000
90	105	10500
120	135	14000
150	170	17500

Please note these come with a remote drive box with 3m cable as standard

Earlsmann reserve the right to change the specification without notice

Rev 010614