

Exterior Lighting

Bedford LED Amenity



UK Manufacture
5 YEAR WARRANTY



Choose Bedford for brighter, safer environments & lower bills

The Earlsmann Bedford range is designed for canopy and car park applications and other public amenities. They are manufactured in the UK to the highest standards ensuring quality and reliability. CREE LEDs are fitted which provides unrivalled efficacy and reliability along with value for money and significantly reduced running costs.

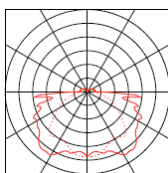
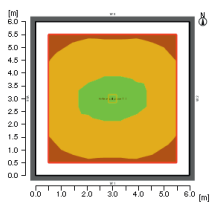
Use of low energy LED technology provides high light levels with a significant reduction in energy use making them extremely environmentally friendly due to their minimal carbon footprint.

Good to know: All Bedford LED units are manufactured in the UK, using CREE LEDs for quality and reliability, and are supplied with a five-year warranty for your peace of mind.

Benefit from...

Low power consumption - **Reduced energy bills, reduced CO₂**
Long life, reduced maintenance - **Lower running costs**
Instant start, full brightness at turn-on - **Improved safety**

Luminous Intensity



Typical output 40W
68lx max
50lx average
5000K cool white
Luminaire height 4.0m

Specifications

Colour Temperature	Cool White 5000K
Efficacy	110lm/W
Colour Rendering Index	80Ra
Voltage	220-240Vac 50/60Hz
Markings	CE
LED	CREE array 2530
LED life	50000hrs L70
Power factor	>0.9
Colour	Black
Materials	Polycarbonate body and diffuser
Dimensions	312mm x 312mm x 216mm
Weight	<4kg
Sealing	IP65
Ambient temp.	-20°C to +40°C

Ordering

BED-DE-JK

Where		
D	Model	20, 30 or 40
E	LED colour	CW
J	Sensor	M = Microwave, M10 = 10% preset
K	Emergency Option	E3

Example
BED-40CW-M
40 watt cool white with microwave sensor

Options

Photocell	
Emergency	
Sensors	Microwave, preset

Also available as a retrofit gear tray option

Bedford amenity light is best for...

Car parks and drive ways
Public areas and amenities
Railway stations and platforms

Not sure which exterior lighting solution is right for your facilities? Give us a call to discuss your requirements.

Output

Model	Total W	Output (Lm)
20	23	2600
30	32	3500
40	45	4700