

Exterior Lighting

Telford LED Street Light



UK Manufacture
5 YEAR WARRANTY



Description

The Earlsmann Telford street light is designed to use LED technology efficiently yet provide a stylish appearance. They are manufactured in the UK to the highest standards ensuring quality and reliability. A modular approach provides automatic built-in redundancy and, by using flat optics, an efficacy above 80lm/W is achieved.

Use of low energy LED technology provides high light levels with a significant reduction in energy use making them extremely environmentally friendly due to their minimal carbon footprint.

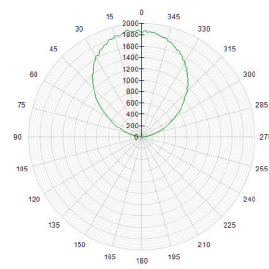
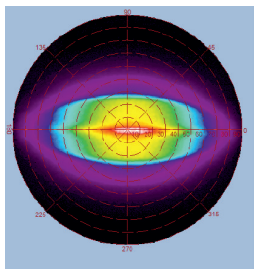
Features

Low power consumption
Instant start
Long life
Good colour rendering
Built-in LED redundancy

Benefits

Reduced energy usage, reduced CO2
Full brightness at turn on - improved safety
Reduced maintenance costs
Improved safety
Light level uncompromised, improved safety

Luminous Intensity



Specifications

Colour Temperature	Cool White 5000K
Efficacy	>80lm/W
Colour Rendering Index	77Ra
Voltage	220-240Vac 50/60Hz
Beam Angle	120° x 55° nominal
Markings	CE
LED	CREE array
LED life	>50000hrs L70 B10
LED module voltage	40V dc
LED T _j	<100° C (Device 135°)
Power factor	>0.9
Driver	>85% efficiency
Colour	White
Dimensions	500mm x 260mm x 110mm
Weight	<5kg
Sealing	IP65

Options

Mounting	Pole or flange
Beam angle	To suit application
Photocell	Mini
Colour	RALxxx
Dimming	

Output

Power (W)	Output (Lm)
30	2600
50	3640

Ordering

TEL-XX-DD

Where
XX = power 30 or 50

DD = Sensor Options
S0 = daylight sensor S1 = daylight sensor with dimming

Example
TEL-30-S0
30Watt with daylight sensor

Please call our sales office to discuss your requirements

Applications

Car Parks
Residential street areas
Footpaths and walkways
Bridges
Stadia

